



Oakfields | Newmarket | Suffolk



local area photography





Plot 6 4 Bedroom Townhouse Offers Overs £525,000

A brand new Townhouse, forming part of an exclusive development situated in a stunning position off Warren Hill Gallops in Newmarket Town Centre.

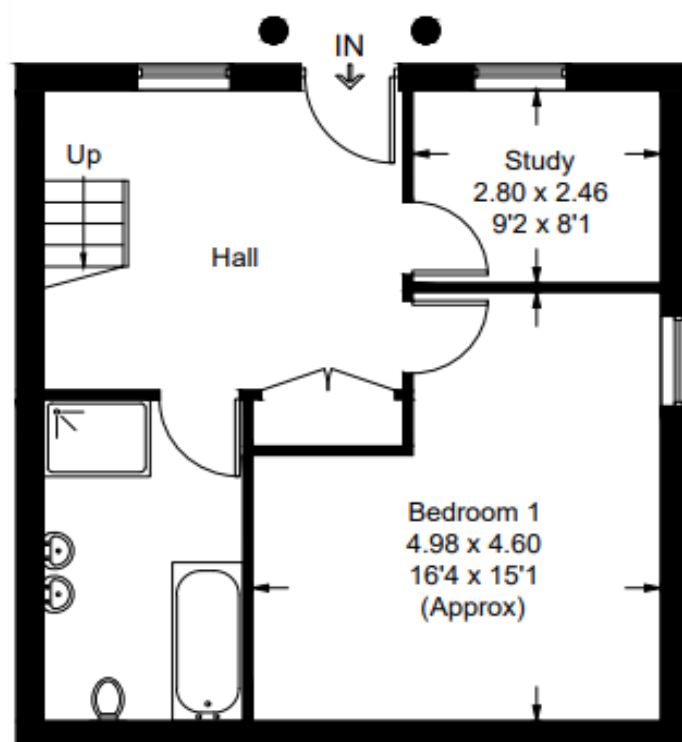
The property will be completed to a high specification including underfloor heating, Bosch Appliances, Oak Finishes all within a gated development.

The impressive accommodation includes a cloakroom, kitchen/dining room, bathroom and two double bedrooms. Outside includes landscaped communal gardens, parking and a seating and barbeque area.

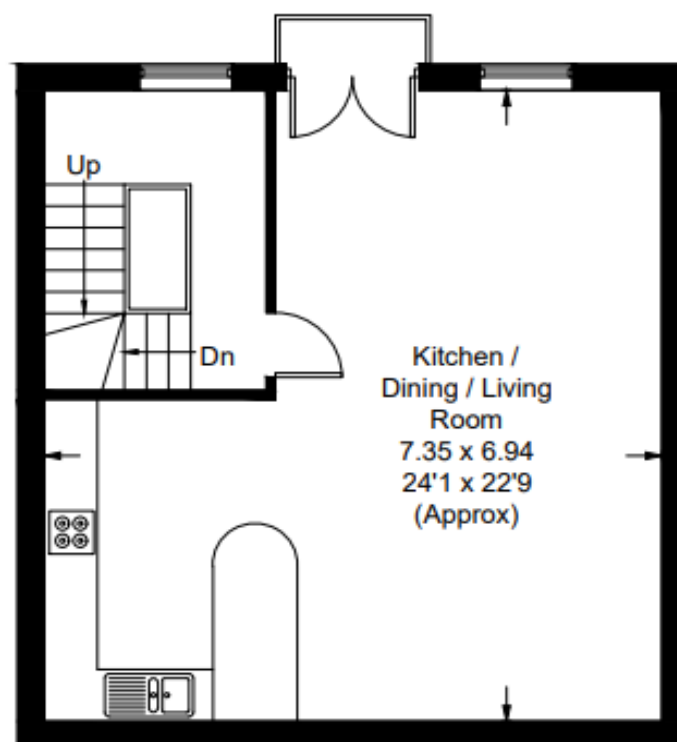


Plot 6, Oakfields

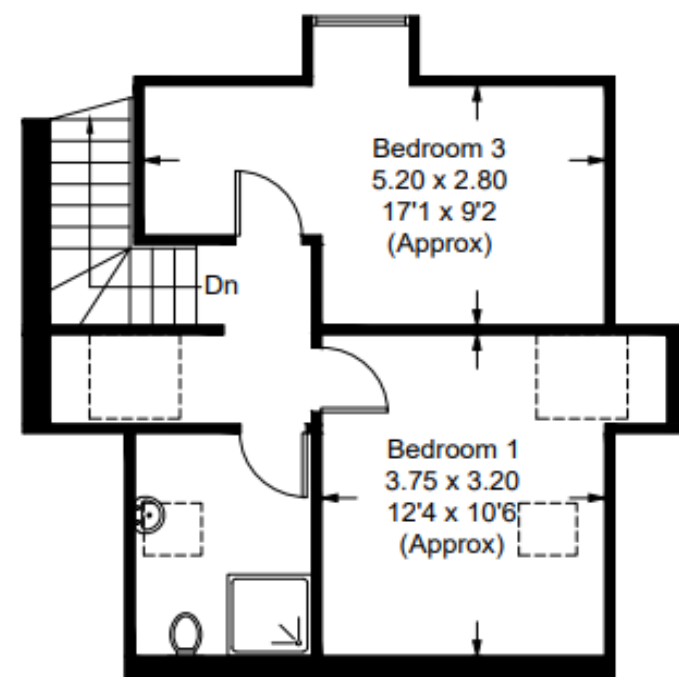
Approximate Gross Internal Area = 142.8 sq m / 1537 sq ft



Ground Floor



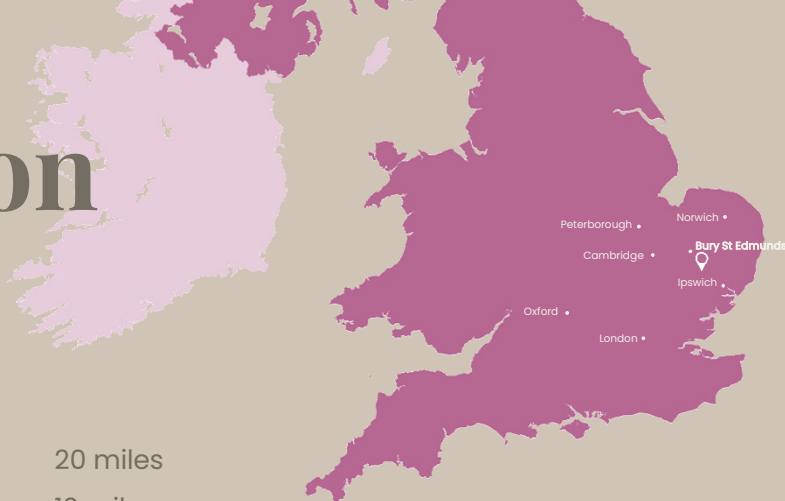
First Floor



Second Floor



Situation



Sudbury 20 miles
Bury St. Edmunds (A14) 12 miles
Stowmarket 10 miles
Cambridge 12 miles



Aldeburgh (Suffolk Heritage Coast) 50miles



From Cambridge
London Kings Cross
(49 mins)



London Stansted Airport
30 mins
Cambridge International Airport
30 mins



There is a wide choice of excellent schooling, both Private and State, within the area.
PRIVATE includes: Old Buckingham Hall (3-13); Culford School (1-19); South Lee School (2-13).
STATE includes: Cockfield CEVC Primary School (4-11); Thurston Community College (11-18).
University of Suffolk at West Suffolk College – Further Education.



General Information

Tenure

Freehold

Service

Mains water, drainage, electricity. Gas central heating.

Local authority

East Cambridgeshire District Council

Viewing arrangements

Strictly by prior appointment through the sole agent. By prior telephone appointment with Whatley Lane on 01638 561 187



Bury St. Edmunds

1 Churchgate Street
Bury St. Edmunds IP33 1RL
+44 (0) 1284 765 256
bury@wlea.co.uk

Newmarket

13 High Street
Newmarket CB8 1RL
+44 (0) 1638 561 187
newmarket@wlea.co.uk

Notting Hill

Caxton Gate, 32 Caxton Rd
London W12 8AJ
+44 (0) 207 221 8838
nottinghill@wlea.co.uk

www.wlea.co.uk

www.rightmove.co.uk

www.countrylife.co.uk

Disclaimer 1. Whatley Lane Estate Agents (the "Agents") are not authorised to make or give any representations or warranties in relation to the property either here or elsewhere, either on their own behalf or on behalf of their client or otherwise. The Agents assume no responsibility for any statement that may be made in our offices. These particulars do not form part of any offer or contract and must not be relied upon as statements or representations of fact. 2. Any areas, measurements or distances are approximate. The text, images and plans are for guidance only and are not necessarily comprehensive. It should not be assumed that the property has all necessary planning, building regulation or other consents and the Agent have not tested any services, equipment or facilities. Purchasers must satisfy themselves by inspection or otherwise. 3. The Agents would urge any potential purchaser to contact our offices to establish availability of this property prior to commencing any journey of distance to view. Details designed and produced by Whatley Lane Marketing | Mar 2021.

